

K22

PERFORMANCE
SEATING





**HOOD SEATING ARE
PASSIONATE ABOUT
YOUR HEALTH
AND WELL-BEING.
WE BRING YOU OUR
UNIQUE ERGONOMIC
AND INTUITIVE TASK
SEATING RANGE.**

K22
**PERFORMANCE
SEATING**





HOOD PHILOSOPHY

WE HAD A VISION...
TO CREATE SIMPLE-TO-USE
ERGONOMIC CHAIRS
THAT WOULD FIT EVERYBODY,
EVERYWHERE. RESOURCES ARE
PRECIOUS, SO A SUSTAINABLE,
LONG-LIFE DESIGN WAS
ESSENTIAL WHILST OFFERING
AFFORDABILITY FOR ALL.
AT HOOD, WE DELIVER OUR
RANGE OF UNIQUE CHAIRS
QUICKLY TO OUR RESPECTED
DEALER NETWORK WITH
A PERSONAL SERVICE AND
COMMITMENT TO LONG-TERM
RELATIONSHIPS.



**We all deserve to have our bodies supported correctly.
Hood Seating encourages dynamic movement to improve
our blood flow so we feel great and are focused to work.
Hood delivers healthy, affordable seating for everyone.**

Where once ergonomics was about preventing or mitigating harm, it is now about helping people be more healthy, productive and active.

High-end seating manufacturers recognise the importance of muscle movement and engineer chairs to encourage people to shift position whilst seated. This movement stimulates the muscles; increases blood flow, relieves pressure points, and helps with concentration.

The mechanisms that enable this movement are no longer the exclusive domain of expensive chairs and can now be found throughout the Hood range. Healthy seating is no longer the luxury for the few but an affordable solution for everyone.

Comfortable employees typically work better; are happier and reduce the sick days an organisation can suffer. Hygiene, too, is improved by using modern materials such as mesh which offers ventilation and is easy to clean.

Our unique patented chairs have been designed so that every component can be removed and replaced to deliver extreme product longevity. Replacing damaged parts is good for our environment too.

You can be confident your Hood chair will always deliver at peak performance and outstanding return on investment.



K22 PERFORMANCE SEATING

ERGO-PROJECT

THE K22 IS THE ULTIMATE PROJECT CHAIR DESIGNED FOR VERSATILE WORKSPACE FIT-OUTS, COMMERCIAL PROJECTS, AND AGILE ENVIRONMENTS. ENGINEERED FOR STRENGTH AND SOPHISTICATION, THIS CHAIR EFFORTLESSLY ACCOMMODATES USERS WEIGHING UP TO 150KG. WITH ITS STYLISH FABRIC AND MESH COMBINATIONS, THE K22 SEAMLESSLY BLENDS INTO ANY HIGH-END SETTING. GUARANTEED FOR 10 YEARS.



At Hood Seating, we are passionate that people adjust their chairs so they stay healthy.

Introducing the K22, an ergonomic task chair designed to enhance your seating experience. With its intuitive pictorial buttons, adjusting the chair's height, seat-slide, and tilt is effortless. Promoting dynamic movement, the K22 ensures optimal blood flow throughout your body. The direct tension control, conveniently located below the pictorial buttons, allows for precise balancing of the chair, accommodating users weighing between 8 and 23.5 stone.

Crafted to foster a healthy seated posture, the K22 features an integrated lumbar curvature that provides exceptional lower back support. The additional lumbar panel can be adjusted within five ratchet positions, ensuring a perfect fit. Addressing the often-neglected upper back and shoulders, the top of the backrest offers comprehensive thoracic support. Built to withstand the test of time, the K22 boasts a polished aluminium base as its standard foundation.

Personalisation is key, and the K22 offers a wide array of customisation options. Choose from 56 different textile options, including leather and upholstered seats, to create a chair that reflects your unique style.

For utmost versatility, the K22's arms can be easily removed without compromising the chair's design or safety. Another practical feature is the optional coat hanger attachment, providing convenient storage for your belongings. Select the ergonomic headrest that prioritises comfort and adds additional adjustability and concentrated neck support.

Experience optimal comfort and support with the K22 ergonomic task chair – the perfect companion for productive workdays.



K22 DESIGN YOUR PERFECT CHAIR

SIT DOWN | STAND OUT
56 TEXTILE OPTIONS
3D ADJUSTABLE ARMS
SYNCHRO MECHANISM
OPTIONAL ERGO HEADREST
MESH, FABRIC OR LEATHER
OPTIONAL COAT HANGER

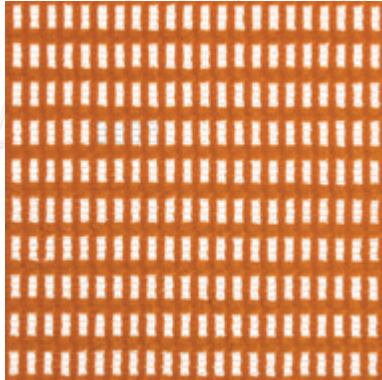
K22 FEATURES

ERGO-ENGINEERED

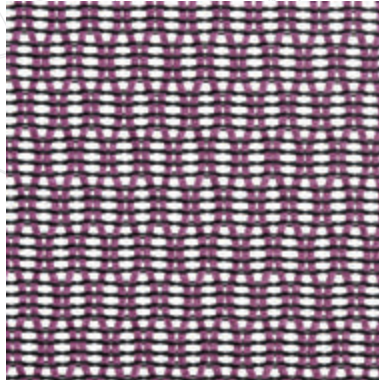
THE K22 RANGE IS PERFECT TO USE THROUGHOUT AN ORGANISATION FOR CONTINUITY OF AESTHETICS AND CORRECT FUNCTIONALITY WHERE REQUIRED: SUITABLE FOR ANY VIBRANT WORK SPACE FROM A SIDE OFFICE TO THE BOARD ROOM –THE K22 RANGE IS THE PERFECT SOLUTION. ONE CHAIR EVERYONE KNOWS HOW TO USE, LOOKS GREAT AND PERFORMS.

K22 TEXTILES

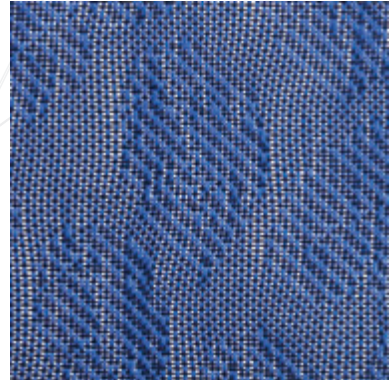
We have selected a range of durable and contemporary textiles from a selection of patterned meshes to luxurious leather and soft fabric.



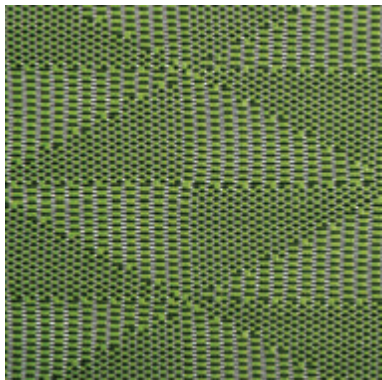
SOFT WEAVE MESH



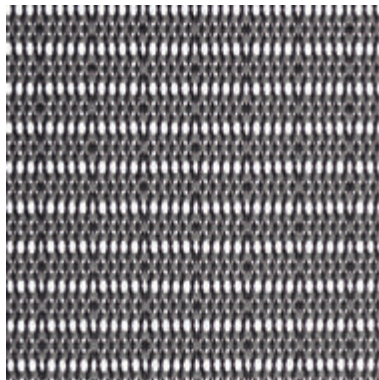
DIAMOND MESH



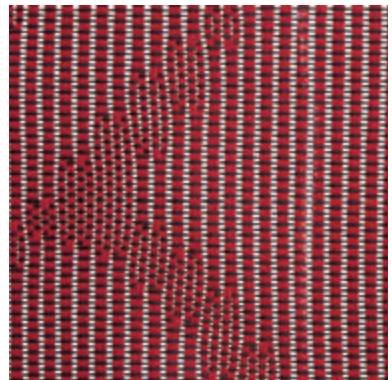
LEAF MESH



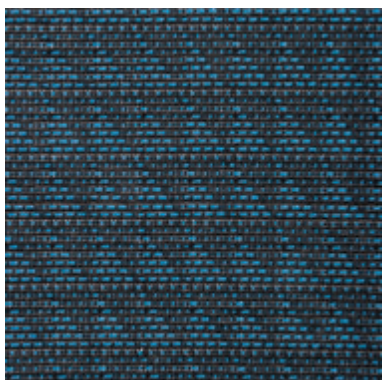
KITE MESH



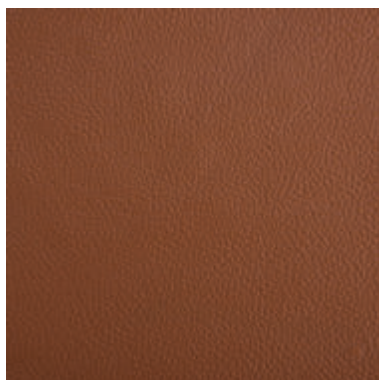
STRIPE MESH



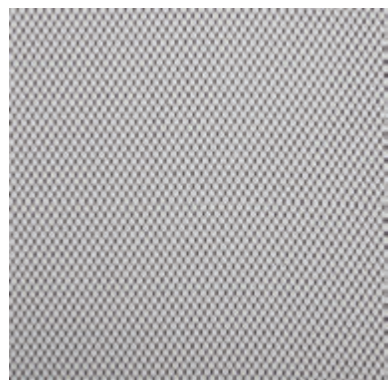
JUNGLE MESH



TRIANGLE MESH



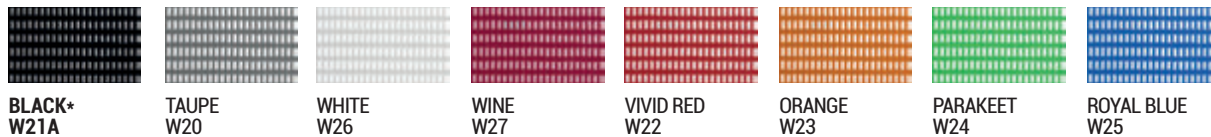
LEATHER



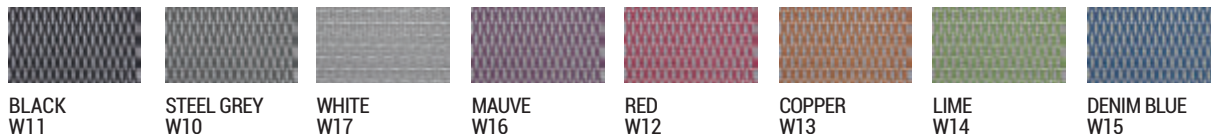
FABRIC

K22 comes in a range of textile colours and a choice of frame and base finishes to allow you to personalise your chair.

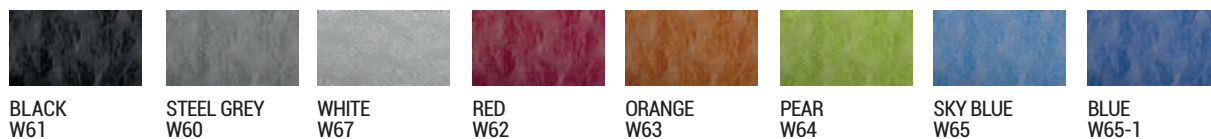
SOFT WEAVE MESH



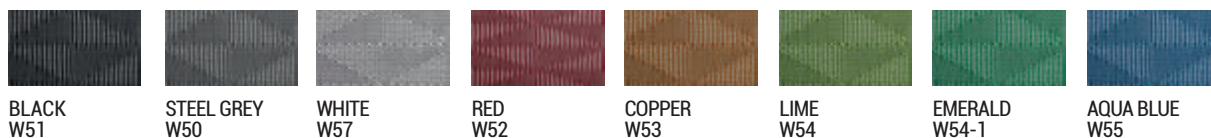
DIAMOND MESH



LEAF MESH



KITE MESH

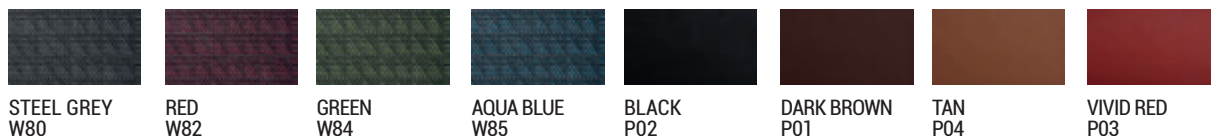


STRIPE MESH



JUNGLE MESH

TRIANGLE MESH



LEATHER

FABRIC



Colours may not be exact due to print processes. Please speak to your Hood Seating representative for upholstery samples.



SHOWROOM:

The Vault,
8-11 St Johns Lane,
London,
EC1M 4BF

HEAD OFFICE:

The Smart Centre,
Tenth Avenue,
Zone 3 Deeside Industrial Park,
Flintshire, CH5 2UA

T: 0333 123 2000
E: SALES@HOODSEATING.COM